

INTRODUCTION:

Adam Tech 2MHR Series 2mm Latch Headers are dual row, PCB mounted, shrouded headers with latches for use with dual row IDC female socket connectors. In addition to providing a shock and vibration proof connection the locking latches also act as ejectors to remove the mating socket. Our low profile, space saving design has a center slot for the socket's polarization bump. Adam Tech's Latch Headers are available in Straight PCB Mount, Right Angle PCB and SMT Mounting. Plating options include choice of Gold, Tin or Selective Gold

FEATURES:

Integral Latches provide Shock and Vibration Proof connection
 Slot for IDC socket Polarization bump
 Straight PCB, Right Angle PCB and SMT versions
 Gold, Tin or Selective Gold plating
 Elevated option available
 Hi-Temp insulator available

MATING SOCKETS:

2mm X 2mm Dual row IDC sockets

SPECIFICATIONS:

Material:

Insulator: PBT, glass reinforced, rated UL94V-0
 Insulator Color: Black (Gray optional)
 Contacts: Brass

Plating:

U = Gold over nickel underplate overall
 SG = Gold over nickel on contact area,
 Tin over copper underplate on tails.
 T = Tin over copper underplate overall

Electrical:

Operating voltage: 250V AC max.
 Current rating: 1 Amp max
 Contact resistance: 20 mΩ max. initial
 Insulation resistance: 5000 MΩ min.
 Dielectric withstanding voltage: 1000V AC for 1 minute

Mechanical:

Mating durability: 500 Cycles min.

Temperature Rating:

Operating temperature: -40°C to +105°C

PACKAGING:

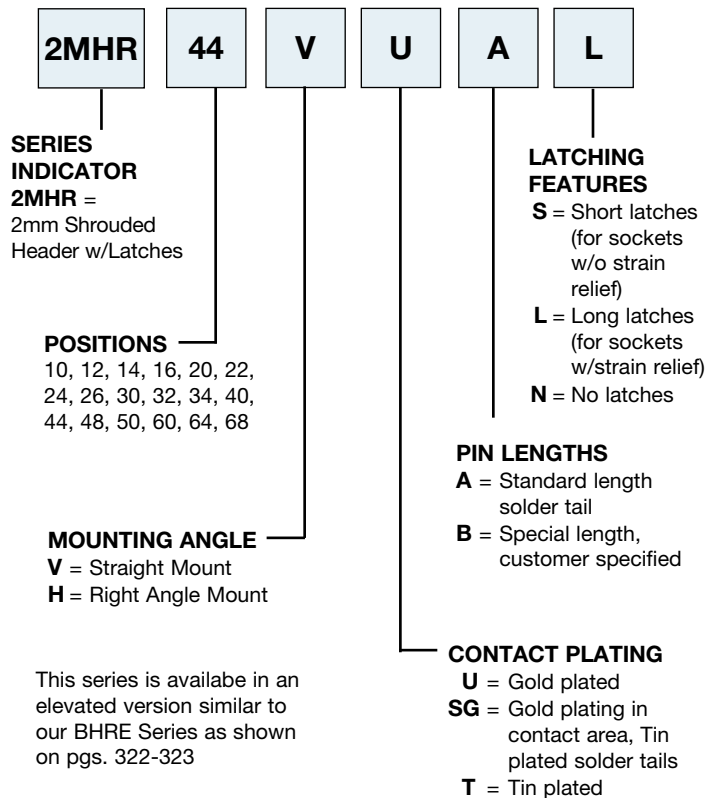
Anti-ESD plastic trays

SAFETY AGENCY APPROVALS:

UL Recognized & CSA Certified, File no. E224053

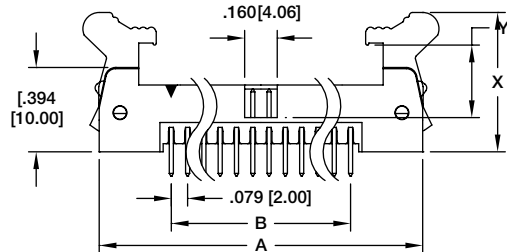
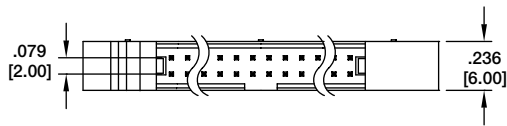


ORDERING INFORMATION



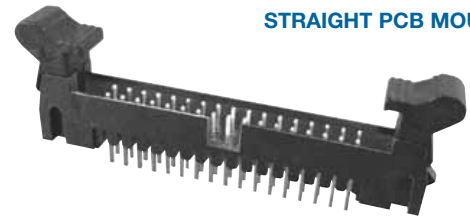
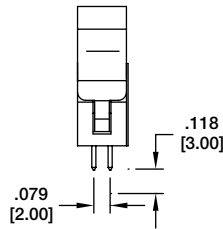
OPTIONS:

Add designator(s) to end of part number
HT = High-temp insulator for high-temp soldering processes



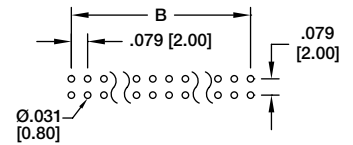
LATCH DIMENSIONS		
	X	Y
LONG LATCH	.775 [19.70]	.452 [11.50]
SHORT LATCH	.665 [16.90]	.342 [8.70]

$A = .079 [2.00] \times \text{No. of Spaces} + .697 [17.70]$
 $B = .079 [2.00] \times \text{No. of Spaces}$

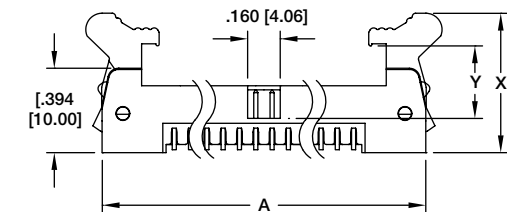
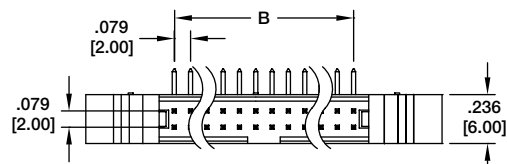


2MHR
STRAIGHT PCB MOUNT

2MHR-34-VUAS

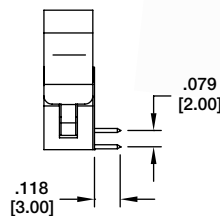


Recommended PCB Layout



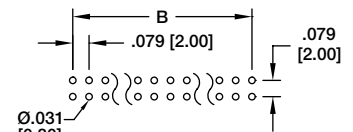
LATCH DIMENSIONS		
	X	Y
LONG LATCH	.775 [19.70]	.452 [11.50]
SHORT LATCH	.665 [16.90]	.342 [8.70]

$A = .079 [2.00] \times \text{No. of Spaces} + .697 [17.70]$
 $B = .079 [2.00] \times \text{No. of Spaces}$

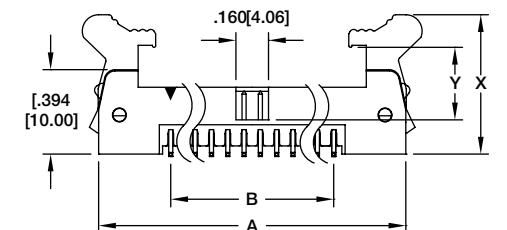
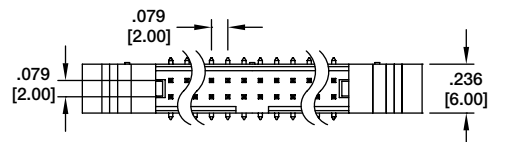


2MHR
RIGHT ANGLE PCB MOUNT

2MHR-60-HUAS

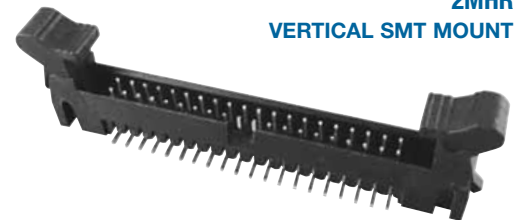
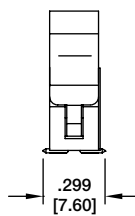


Recommended PCB Layout



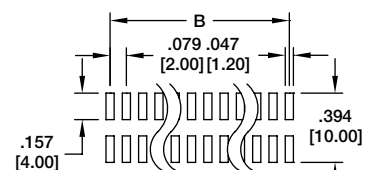
LATCH DIMENSIONS		
	X	Y
LONG LATCH	.775 [19.70]	.452 [11.50]
SHORT LATCH	.665 [16.90]	.342 [8.70]

$A = .079 [2.00] \times \text{No. of Spaces} + .697 [17.70]$
 $B = .079 [2.00] \times \text{No. of Spaces}$



2MHR
VERTICAL SMT MOUNT

2MHR-40-HUAS



Recommended PCB Layout